

# SPS 225mm Round Vari-Level Vertical Drain

## 100mm Outlet

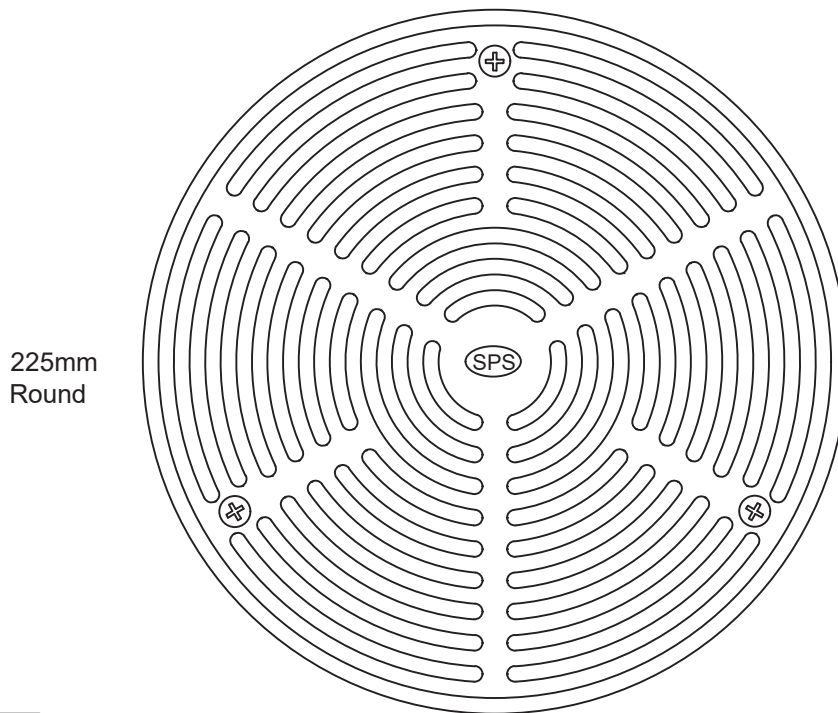
Specification codes:

R225N/C (nickel bronze grate, CI lower body) \*special order\*

R225S/C (satin 316 SS grate, CI lower body)

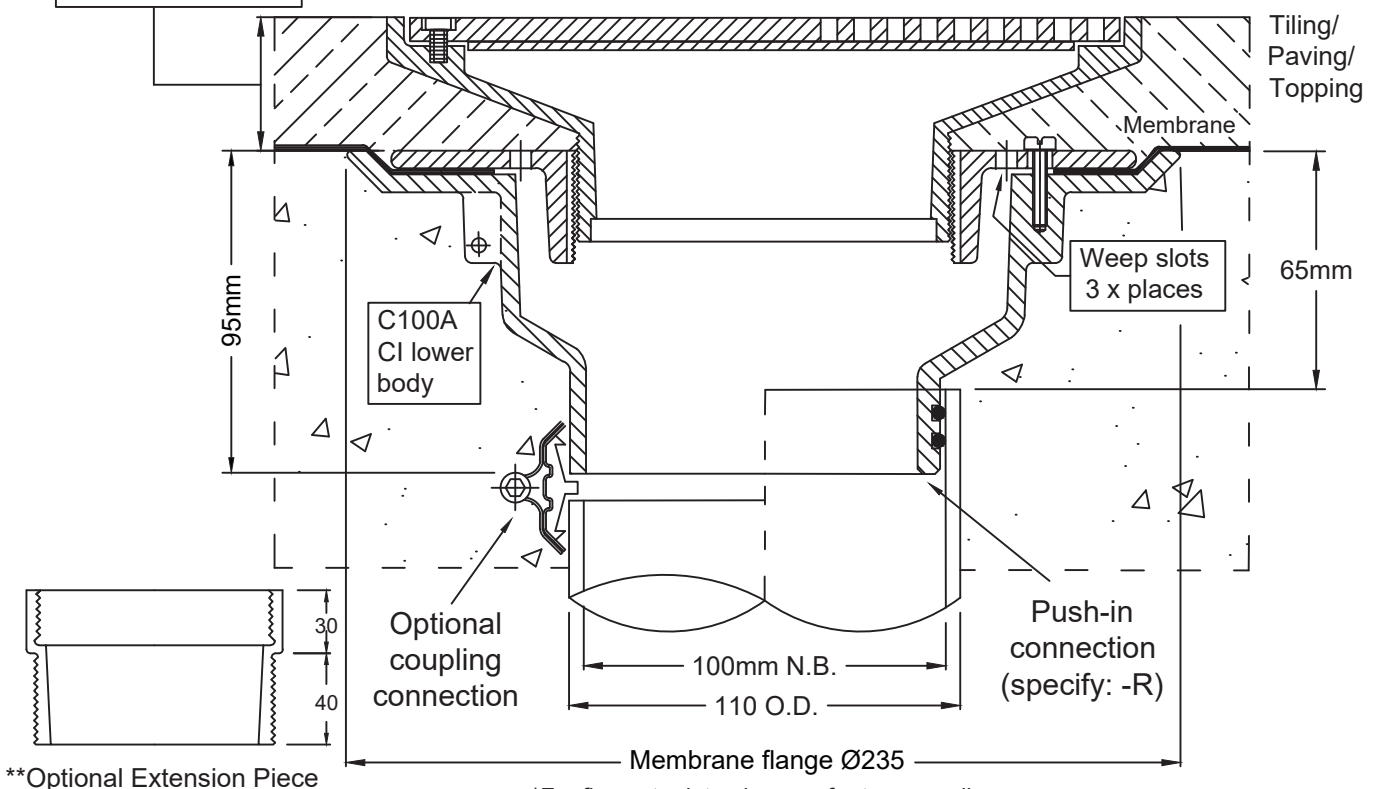
- Height-adjustable high-heel friendly grate assembly.
- Available in satin 316 stainless steel. Polished 304SS and nickel-bronze available by special order only.
- C100A "deluxe" CI lower body with reversible clamp collar.

High-heel friendly pattern (5.5mm gaps)



Height adjustment:  
Min. 30mm  
Max. 70mm\*\*

Typical Application



\*\*Optional Extension Piece

\*For flow rate data please refer to appendix.

Metabronze Industries Ltd.

Office: 09 441 3824 Email: sales@metabronze.co.nz Website: metabronze.co.nz