

# SPS 150mm Round Vari-Level Cleanout

## 100mm Outlet

**Specification codes:**

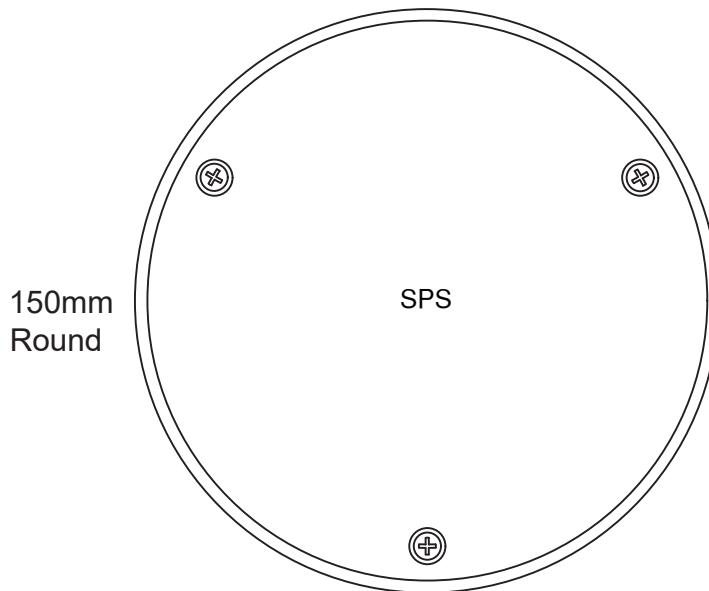
R150SC/Q (304 SS cleanout, Q100Y retro-fit lower body)

R150SC/C (304 SS grate, C100A CI "deluxe" lower body)

For non-slip finish\*, add suffix "N" eg "R150SPN/C"

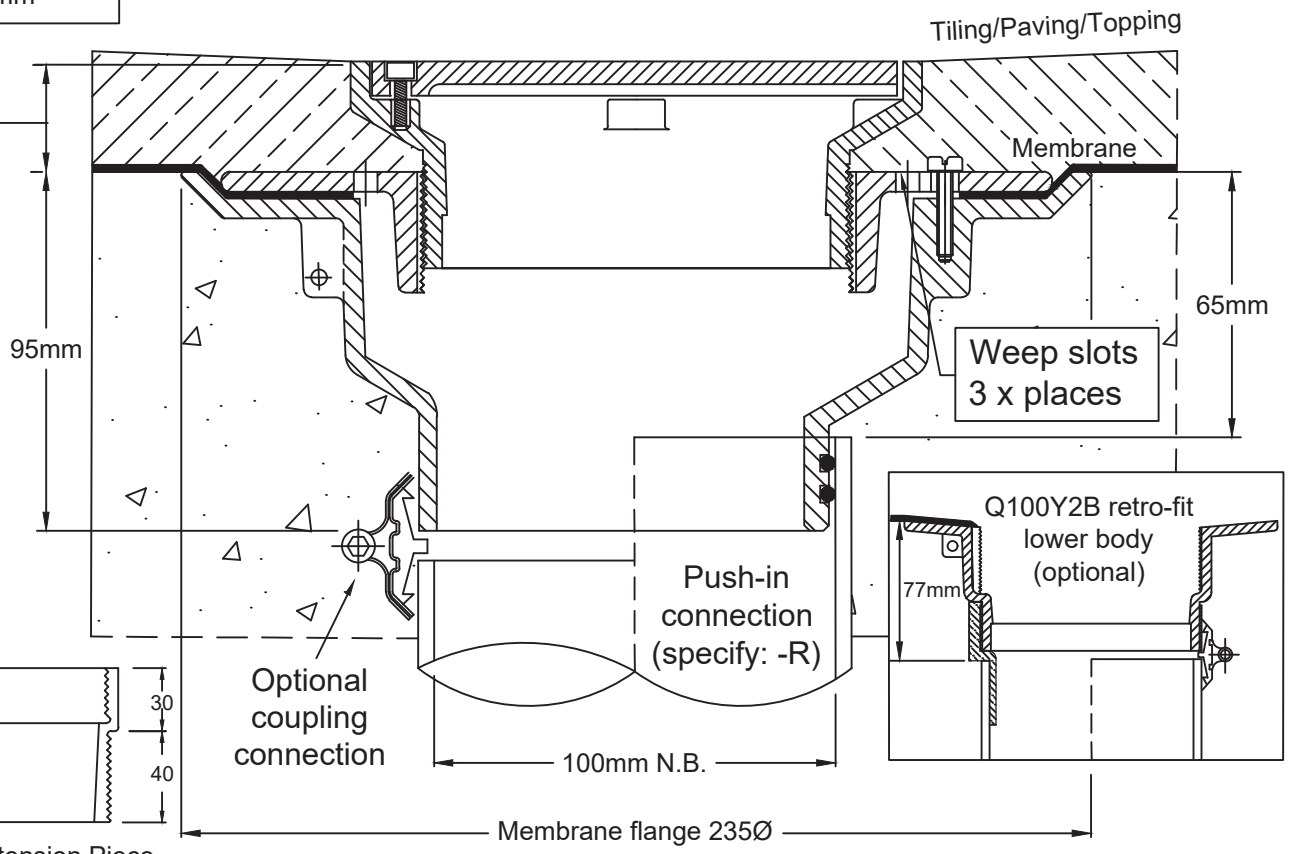
\*316SS and non-slip finish both available by special order

- Cleanout assembly made from 304 stainless steel. 316 stainless steel non-stock option.
- Satin finish standard with optional non-slip finish (concentric ridges).
- C100A CI "deluxe" lower body with reversible clamp collar (pictured).
- Optional CI retro-fit lower body fits inside 150mmØ core hole.



Typical Application

Height adjustment:  
Min. 25mm  
Max. 60mm\*\*



\*\*Optional Extension Piece

Metabronze Industries Ltd.

Office: 09 441 3824 Email: sales@metabronze.co.nz Website: metabronze.co.nz