

# SPS 300mm Square Fine Pattern Drain With Side-Outlet Lower Body

**Specification code:**

Q300S24/C109 (polished 304 SS grate, 100mm CI lower body)

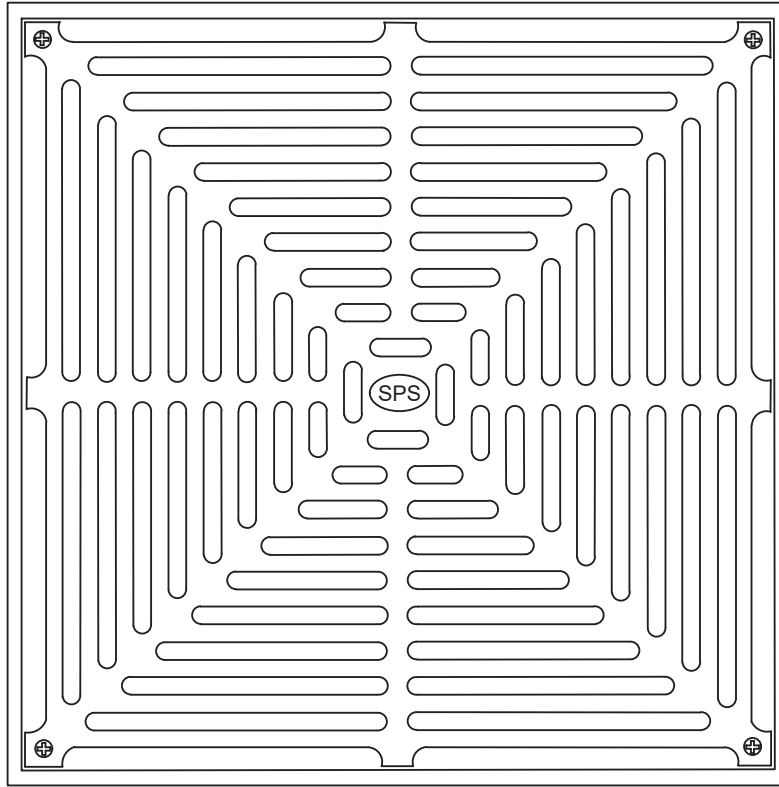
Q300S2/C109 (satin 316 SS grate, 100mm CI lower body)

Side outlet - "C109" = 100mm; "C89" = 80mm

100mm outlet  
80mm outlet

High-heel friendly pattern (6mm gaps)

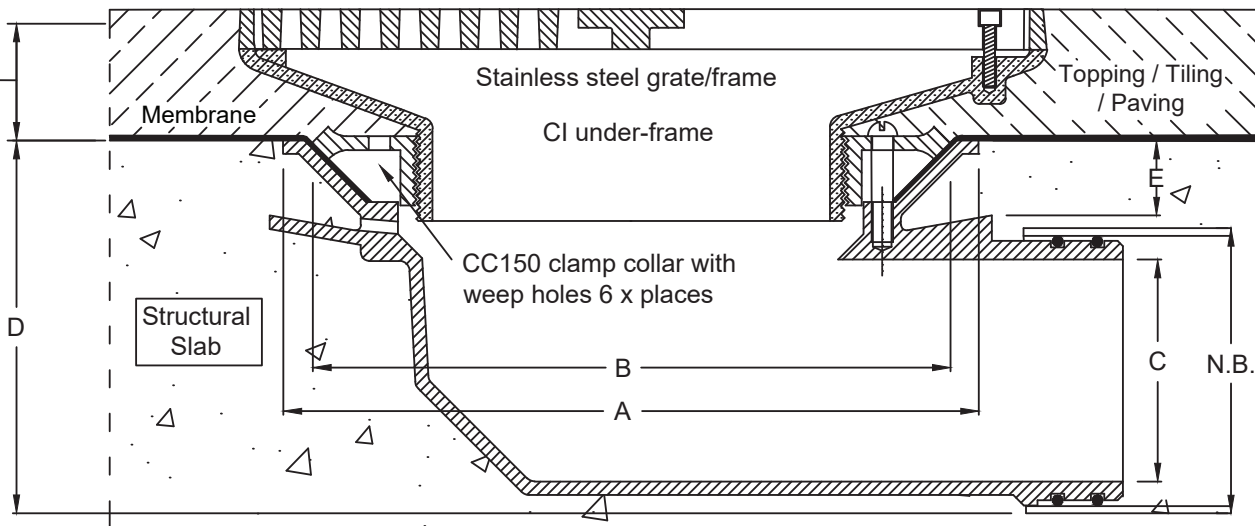
300mm  
Square  
6mm  
Gaps



- Height-adjustable grate assembly with high-heel-friendly pattern.
- Available in polished 304 and satin 316 stainless steel.
- CI "Trufluo" side-outlet lower body with 150mm BSP reversible clamp collar.

Height adjustment:  
Min. 30mm  
Max. 90mm\*\*

**Typical Application**



\*\*EP150 extension piece available to increase max. height

Outside edge of 100mm PVC

N.B.	A	B	C	D	E
80	260	240	62	115	28
100	260	240	83	140	28

Metabronze Industries Ltd.

Office: 09 441 3824 Email: sales@metabronze.co.nz Website: metabronze.co.nz