

# SPS 150mm Square Vari-Level Vertical Drain

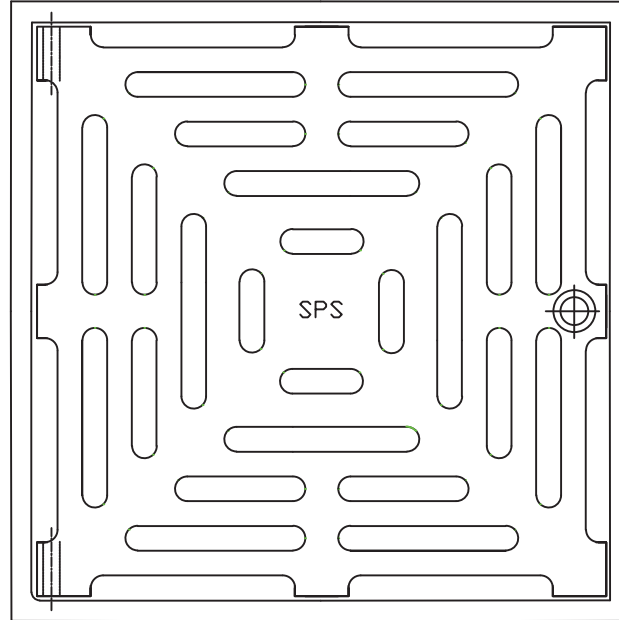
## 100mm Outlet

**Specification codes:**

- Q150G/C (bronze grate, CI lower body - non-stock option)
- Q150N/C (nickel bronze grate, CI lower body)
- Q150S4/C (polished 304 stainless steel, CI lower body)
- Q150S/C (satin 316 stainless steel grate, CI lower body)

- Height-adjustable hinged grate assembly.
- Available in polished 304 & satin 316 stainless steel. Bronze and nickel-bronze available by special order only.
- C100A CI "deluxe" lower body with reversible clamp collar.

High-heel friendly pattern (6mm gaps)

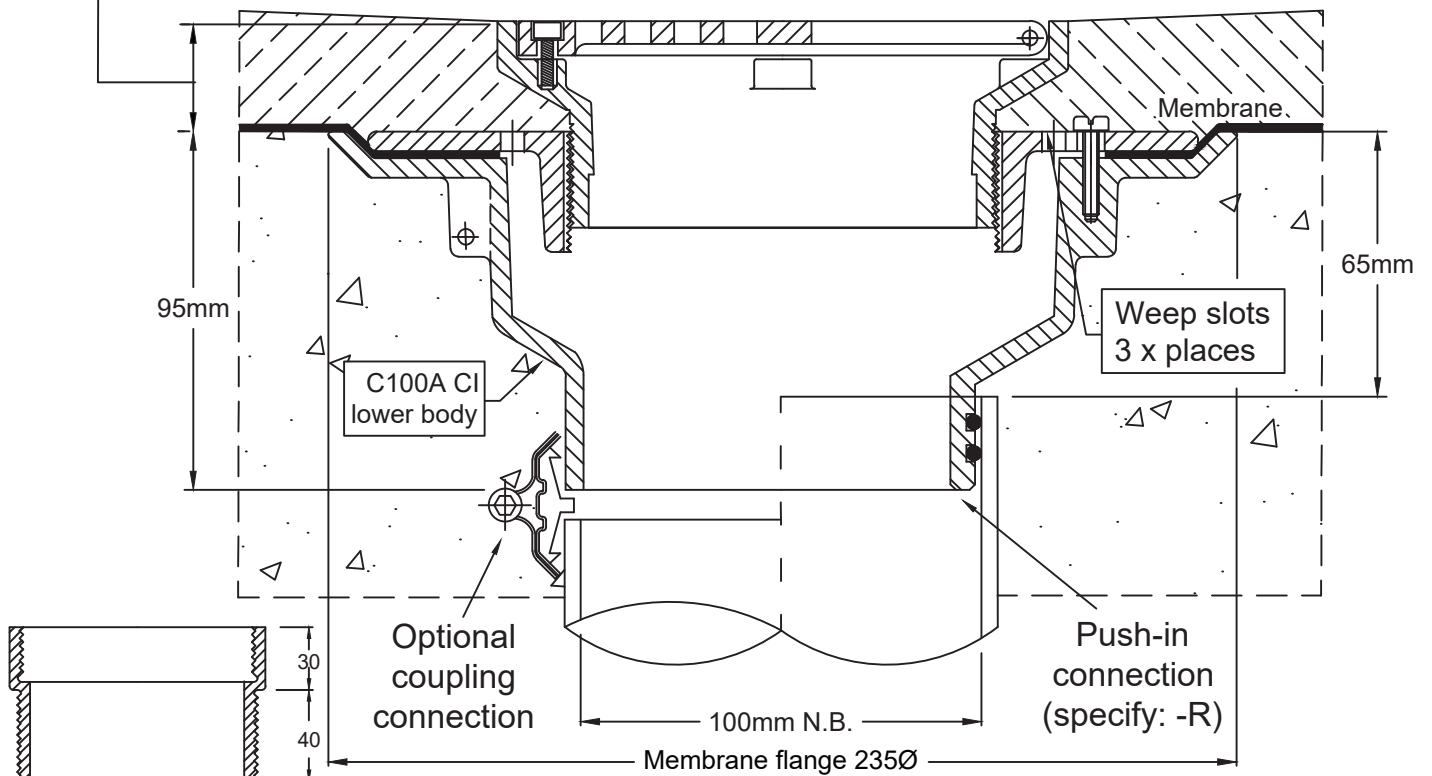


150mm Square

Height adjustment:  
Min. 25mm  
Max. 60mm\*\*

Typical Application

Tiling/Paving/Topping



\*\*Optional Extension Piece

\*For flow rate data please refer to appendix.

Metabronze Industries Ltd.

Office: 09 441 3824 Email: sales@metabronze.co.nz Website: metabronze.co.nz