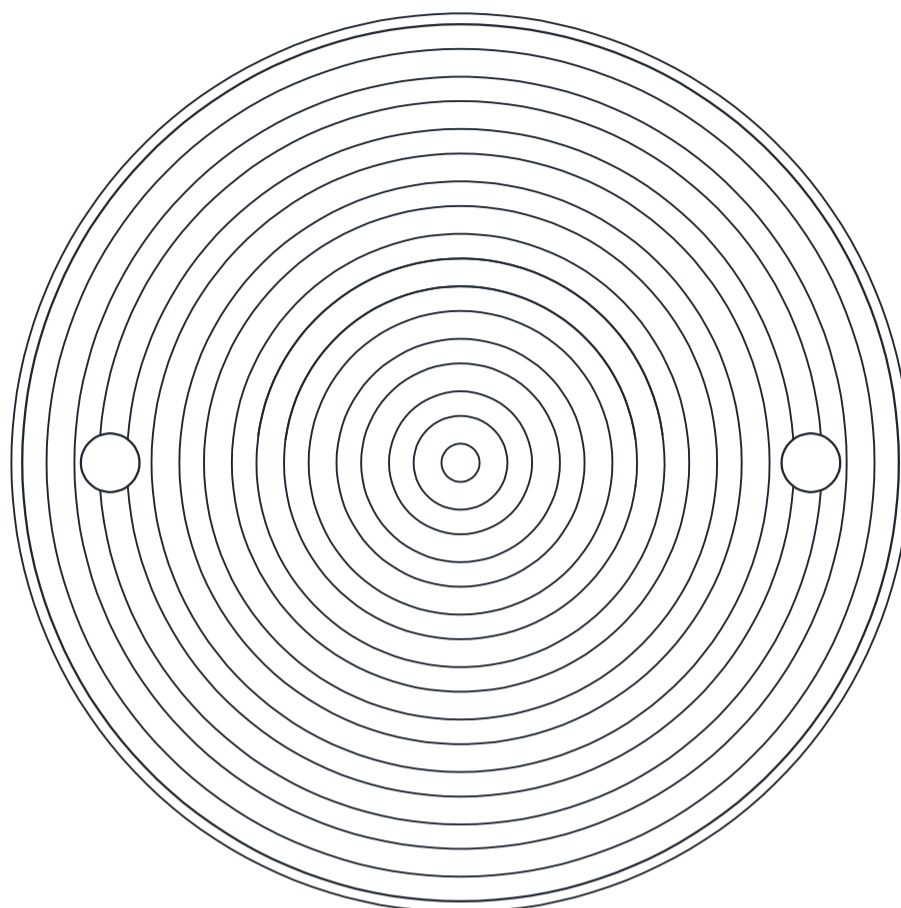


# METABRONZE 150mm Round Rodding Eye

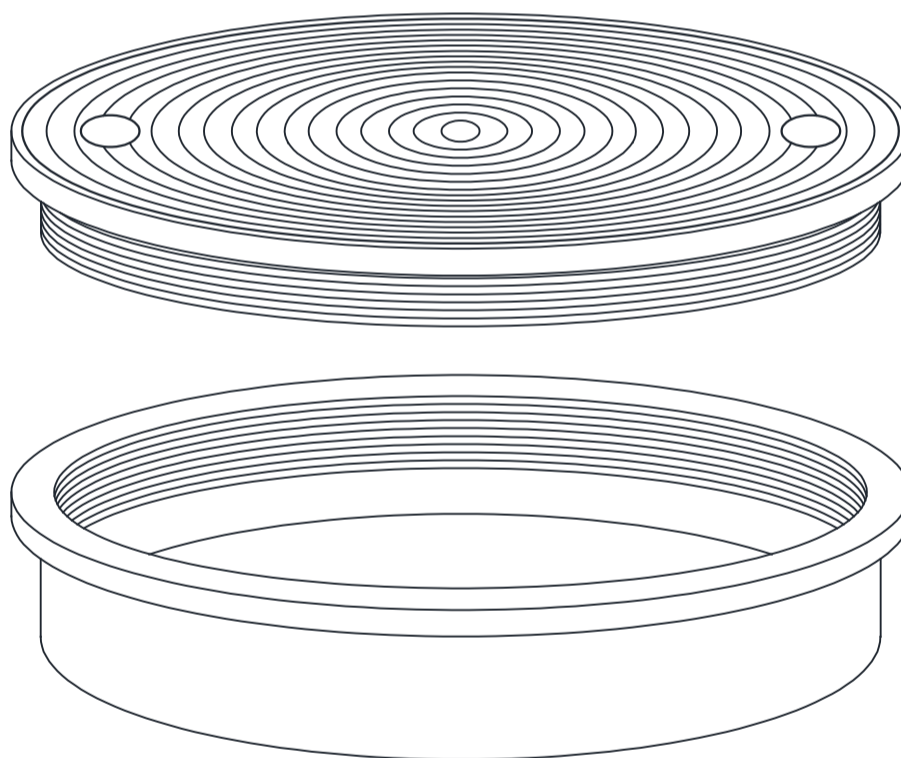
Specification Code:  
CE662 (Bronze Non-slip Grooved Finish)

- Non-slip grooves on lid surface.
- Flat lid surface also available.
- Lid Turning Key available, use code CE664.

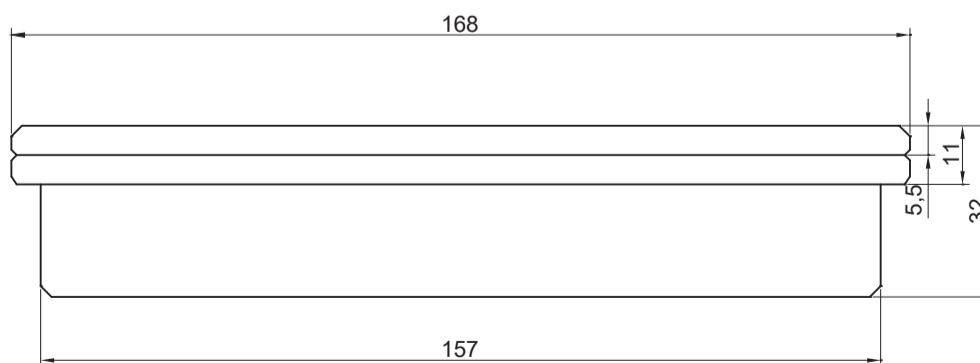


TOP VIEW

- Heavy-duty Rodding Eye in cast-machined LG2 Bronze.
- Screw on lid.
- Body fits to a 150mm pipe.



EXPLODED VIEW



*(Due to the casting process actual measurements may vary from the measurements detailed within drawing.)*

**Metabronze Industries Ltd.**

Office: 09 441 3824 Email: [sales@metabronze.co.nz](mailto:sales@metabronze.co.nz) Website: [metabronze.co.nz](http://metabronze.co.nz)